



## RELINQUISHMENT REPORT

KIRAKKA N.  
KIRAKKA S. 1-2

Anglo American B.V. Holland, Filial Sverige

Claim: Kirakka N.

Mining Register Number: 8007/1

Claim: Kirakka S. 1-2

Mining Register Number: 8007/2-3

## SUMMARY

Anglo American Exploration B.V. Filial, Sverige acquired the claims in order to prospect for nickel. The exploration was conducted during the time period 2004-2008. The Project Geologist was Dennis Fitzpatrick.

Ground geophysical electromagnetic (slingram) and magnetic surveys were carried out by Suomen Salmi Oy. The spacing in between lines was 100 m with 20 m spacing along each line for the slingram surveys and 10 m spacing along each line for the magnetic surveys. A total of 14400 line metres were measured. Base of till surveys were conducted by Maclenni Consulting. The spacing in between lines was 100 m and samples were collected every 25 m down each line. 7 lines were surveyed and a total of 208 samples were collected. Samples were sent for analyses at Omac Laboratories, Galway, Ireland using the ICP-Ar+PG analytical pack.

No diamond drilling has been carried out within these claims. The claims were relinquished as no significant sulphide mineralisation was found.

## INTRODUCTION

This relinquishment report describes the work undertaken on the Kirakka N. and Kirakka S. 1-2 claims by Anglo American Exploration B.V Filial Sverige. The dates related to the tenure application are specified in the table below.

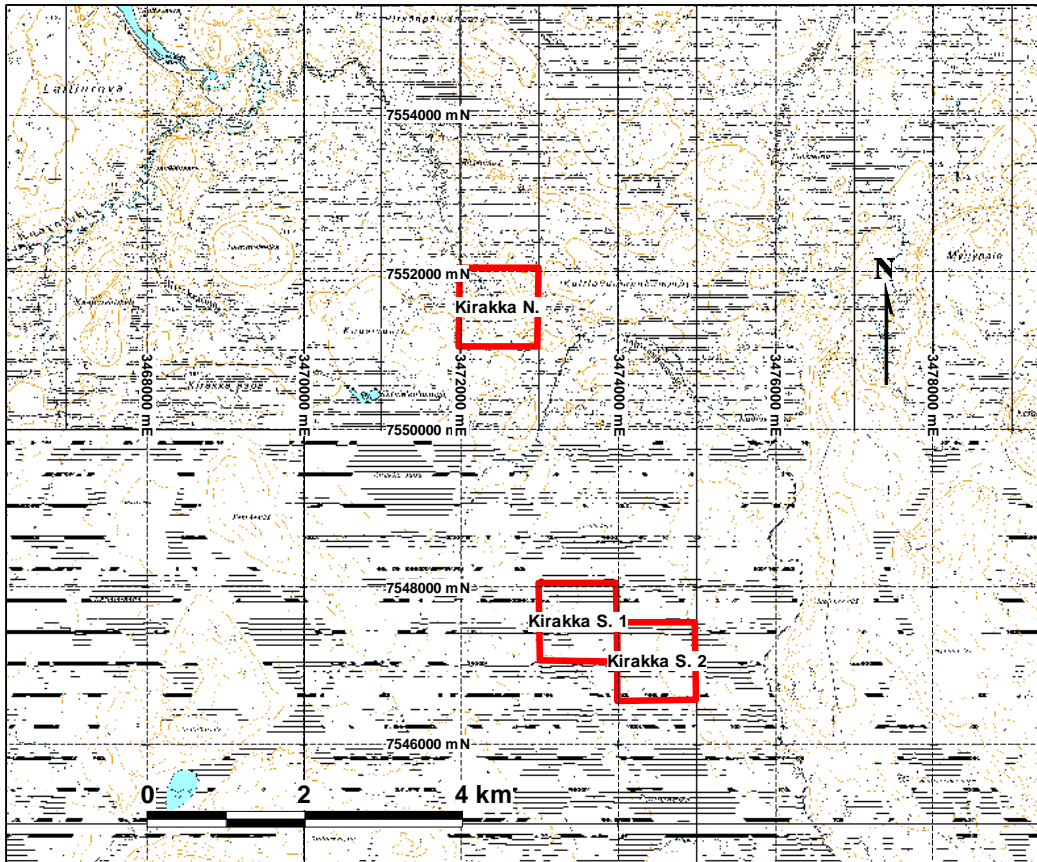
Name of Claim	Date of Application	Registration Date	Relinquishment Date
Kirakka N.	04.07.2005	20.09.2005	20.09.2010
Kirakka S. 1-2	04.07.2005	20.09.2005	20.09.2010

The commodity the claims were applied for is nickel (Copper). The claims are located in Lapland in the Northern part of the Municipal of Sodankylä on mapsheets 3723 04 and 3726 06. The general location as well as the claim coordinates are specified in the table and illustrations below. The detailed location is observed in the illustration below.

CLAIM NAME	CLAIM	MID-POINT	
		EASTING	NORTHING
Kirakka N.	8007/1	3472599	7551495
Kirakka S. 1	8007/2	3473604	7547493
Kirakka S. 2	8007/3	3474604	7546992



*Location of Kirakka claims within Finland*



*Detailed location of the Kirakka N. and Kirakka S. 1 and Kirakka S. 2 claims.*

## **BACKGROUND**

The area where the claim blocks are located were highlighted by the processing and interpretation of geological, geophysical and geochemical data purchased from the Geological Survey of Finland (GTK).

## **CO-ORDINATE SYSTEM AND SURVEY METHODS**

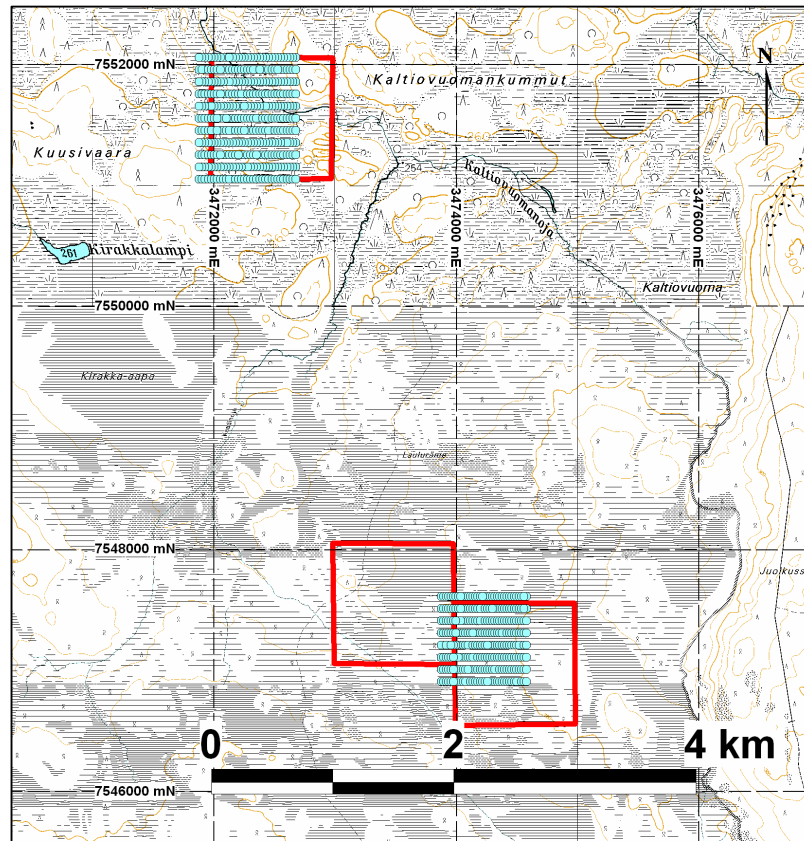
The coordinate system used in this exploration programme is Finnish KKJ zone 3 (YKJ). Handheld GPS was used for general prospecting purposes. Differential GPS was used by Suomen Malmi Oy for the staking of the geophysical grid. These grids were utilised for all geophysical ground measurements.

## **WORK CARRIED OUT**

### **Ground Geophysical Surveys**

Ground Geophysical electromagnetic (slingram) and magnetic surveys were carried out by Suomen Malmi Oy. Slingram line spacing was every 20m along survey lines and magnetic line spacing was every 10m along survey lines. Grid locations

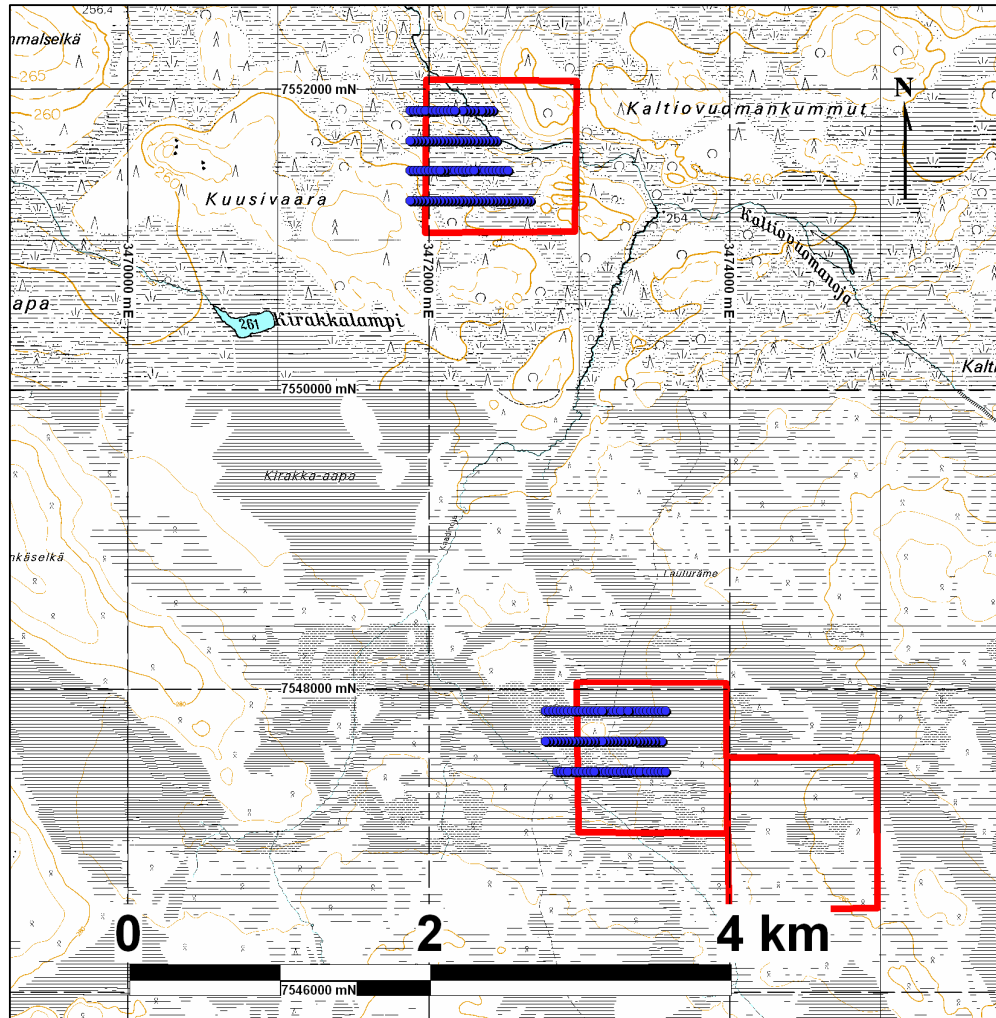
are shown in the map below. Geophysical survey results are presented within the digital files attached. A total of 14400 line metres were measured within the Kirakka N. 1 and Kirakka S. 2 claims.



*Geophysical Survey Locations*

### **Base of Till Sampling**

Base of till sampling was undertaken by Maclenni Consulting within the Kirakka N. and Kirakka S. 1 claim blocks. Samples were taken every 25 m along survey lines. The location of the 7 lines which were sampled are shown in the map below. A total of 208 samples were collected and analysed by Omac laboratories, Galway, Ireland using the ICP-Ar+PG analytical pack. The exact sample locations and sample results are listed within the attached digital files.



*Location of Base of Till Samples within the Kirakka N. and Kirakka S. 1.*

### **Diamond Drilling**

No diamond drilling has been carried out on these claims.

### **Results**

The claims were relinquished since no significant sulphide mineralisation was detected.

Suzie Austen  
 Bo Långbacka  
 18.12.2008  
 Anglo American Exploration B.V.  
 Kangastie 1 B6  
 99600 Sodankylä Finland  
 Tel: +358 (0) 166 42368